



SUMMER
2024

KELSEY CREEK FARM

Promoting learning opportunities
in a farm environment





Kelsey Creek Farm provides the community an opportunity to cross the threshold of urban living into an agricultural experience, while maintaining the historic integrity of the farm, through interpretive displays and education. Our programs foster creativity and active play. The Farm's two historical barns sit prominently on the crest of a hill. There is no entrance fee; however, we welcome and appreciate your donations.

When visiting any of Bellevue's parks, all dogs and other pets must be kept on a leash. Out of consideration for our farm animals' health and wellbeing, please observe all posted signs prohibiting pets from the barnyard.

**FARM ANIMALS IN THE PASTURES
DAILY FROM 9 a.m.-3 p.m.
365 DAYS A YEAR
(R) RESIDENT / (N) NON-RESIDENT**

Summer Day Camps

Kelsey Creek & Kid's Connection Day Camps

Explore the farm, play active outdoor games, create crafts, and make new friends. Trained staff will provide a safe and supportive environment in a small group setting. Each week will bring a variety of new and different activities.

Location: Kelsey Creek Farm

Ages: 4-6 (Kelsey Creek Day Camp)

Ages: 7-10 (Kid's Connection Day Camp)

Camp Fees: \$287(R) \$344(N)

***Adjusted Fees:** July 1-3 \$172 (R) \$206 (N)

Hours/Dates: Mon-Fri, 9:30 a.m.-3 p.m.

Extended Care Package Available

Extended Care Registration is separate

Fees: \$124 (R) \$149 (N)

***Adjusted fees:** July 1-3 / \$74 (R) \$89 (N)

Hours: 7:30 a.m.-5:30 p.m.



Out on the Farm

Get up close with the rabbits and chickens while learning what it takes to care for the smaller animals on the farm. Learn about what chickens eat and how bunnies stay cool in the summer. Help with farm chores by gathering eggs and making treats for the chickens.

Dates: June 24-28

Ages: 4-6

Ages: 7-10

Country Fair

Campers, join the fun at an old-fashioned country fair. Work with your group to make a pie for a contest, play fair games, and cool off with a refreshing glass of lemonade.

Dates: July 1-3 *

Ages: 4-6

Ages: 7-10



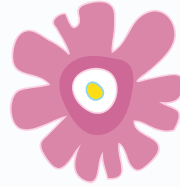
Farm Science

How far can an egg fall without breaking? Learn about how pigs use mud to stay healthy and create a muddy concoction for your own toy piglet. This week will be filled with farm-style experiments, outdoor games, and activities.

Dates: July 8-12

Ages: 4-6

Ages: 7-10



Sports & Games for All

Race your friends in barnyard relays, challenge yourself through a western-style obstacle course and participate in a variety of active sports and games. Join us as we celebrate the week with the Farm Olympics.

Date: July 15-19

Ages 4-6

Ages: 7-10

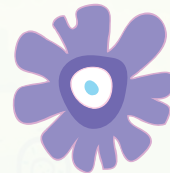
Wildlife Beyond the Barnyard

Did you know that owls, blue herons, beavers, and bobcats all call Kelsey Creek Farm Park their home? Create your own pair of binoculars and explore nearby wetlands, forest, and creek-sides in search of wildlife.

Date: July 22-26

Ages: 4-6

Ages: 7-10



Country Cooking

Get ready for some old-fashioned cooking fun! Hand-crank some tasty homemade ice cream, make a special treat for the ponies and create a unique craft using food. Campers will turn milk from a certified Western Washington dairy into butter and taste test it on crackers.

Date: July 29-Aug 2

Ages: 4-6

Ages: 7-10



Stay Cool

Learn how the Kelsey Creek Farm animals stay cool on those long hot days of summer. Fill water troughs, make frozen treats for the rabbits and watch the pig play in the mud. Get ready for some wet and refreshing fun! This week will include a field trip to Robinswood Park for a water carnival.

Date: Aug 5-9

Ages: 4-6

Ages: 7-10

Young Farmers

Help the farmers get the barn stalls ready for the animals by bringing in fresh bedding, take a goat on a walk, and make a tasty treat for the pig. Campers will learn the difference between hay and straw, what animals need to be healthy, and how to be safe around large farm animals.

Date: Aug 12-16

Ages: 4-6

Ages: 7-10

Farm Discoveries Camp

Join us for a hands-on adventure as you explore Kelsey Creek Farm and the Fraser Cabin. Children actively participate in animal care, making animal treats, working on barnyard chores, and learning fun facts about the farm. Time to play, arts and crafts, and circle time help children develop important social skills. This special half-day camp will have your child loving our chickens, goats, cows, pigs, and rabbits. A pony ride will be included.

Ages: 4-6

Fees: \$275 (R) \$330 (N)

Hours/Dates: Mon-Fri, 9 a.m.-1 p.m.

June 24-28

July 8-12

July 15-19

July 22-26

July 29-Aug 2

Aug 5-9

Aug 12-16



Robinswood Day Camp

Create a summer of memories for your child at Robinswood Park. Active play, imagination, and creativity in a safe and caring environment. Each week will bring a variety of new and different activities.

Location: Robinswood Park

Ages: 4-7

Fees: \$287 (R) \$344 (N)

***Adjusted Fees:** July 1-3 \$172 (R) \$206 (N)

Hours/Dates: Mon-Fri, 9:30 a.m.-3 p.m.

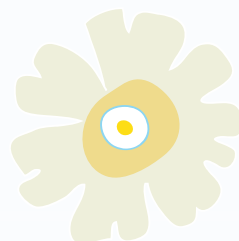
Extended Care Package Available

Extended Care Registration is separate

Fees: \$83 (R) \$100 (N)

***Adjusted fees:** July 1-3 / \$50 (R) \$60 (N)

Hours: 8:30 a.m.-5 p.m.



Salty Seas

Ahoy mateys! Join us for a deep sea adventure full of games, crafts, and water activities. Use your imagination to come up with your own pirate name. Create your own underwater scene using sand and seashells. Get active with a game of sharks and minnows. Campers will have fun learning about sea creatures and making new friends.

June 24-28

Summer Celebrations

Come one, come all to a celebration of summer! We will celebrate some of the best parts of summer vacation this week. Campers will work with their teammates to make a pie for a pie making contest. Then we will cool off with a snow cone after all that baking. Get ready for Independence Day with a fun firework craft.

July 1-3*

Wonders of Science

Open the door to the world of science. Mix up some ooey, gooey experiments and see what cool concoctions you can make. Learn about states of matter by making Oobleck, watch diffusion in action with an experiment using candy, and see the importance of washing your hands!

July 8-12

Ready, Set...Go!

Join us for this fun-filled week, packed with great games, sports and non-stop action! Run relays with new friends and challenge yourself through an obstacle course. This week campers will travel to Kelsey Creek Farm to participate in camp-wide Olympics.

July 15-19

Out and About in Nature

Take a hike and explore Robinswood Park searching for unique plants, bugs, and animals. Design and create your own binoculars to use on a nature scavenger hunt. How many tiny creatures can you find? Campers will spend time outside learning about and enjoying nature.

July 22-26

Cooking Science

Put on your apron and bring your appetite! Mix up some yummy goodies in the Robinswood kitchen. Campers will make butter from cream and taste test it with some yummy crackers. Create crafts using food ingredients and participate in some exciting science experiments!

July 29-Aug 2

Let's Get Wet!

Plan on plenty of water fun this week! Use your imagination to design your own sea creatures then bring them to life by making them out of clay. Campers will have fun running through the sprinkler and playing water games at a camp-wide water carnival. Get ready because we're going to get wet!

Aug 5-9



Go Go with Van Gogh Art Camp

Fine arts on the farm, inspired by the Kelsey Creek Farm environment. This art focused camp is designed to celebrate individual interests of creative expressions through artistic guided exploration and outdoor play for increased joy. It is designed to celebrate individual interests of creative expressions through artistic exploration and outdoor play for increased joy. Multiple-media projects using colorful acrylics, watercolor with color theory exploration, sculpting with Model Magic, creating collages and oil pastels along with sketching on the farm. Dress for creative mess and bring your playful led imagination. Instructor Diane Culhane is a renowned artist in the Pacific Northwest with a master's degree in art education and extensive teaching experience. Her work is represented in galleries and shows across the country. *\$20 supply fee due the first day of camp.*

Ages: 6-11

Camp Fees: \$440 (R) \$528 (N)

***Adjusted Fees:** July 1-3 \$264 (R) \$317 (N)

Hours/Dates: Mon-Fri, 9:30 a.m.-3 p.m.

Extended Care Package Available

Extended Care Registration is separate.

Fees: \$124 (R) \$149 (N)

***Adjusted fees:** July 1-3 / \$74 (R) \$89 (N)

Hours: 7:30 a.m.-5:30 p.m.

June 24-28

July 1-3*

July 8-12

July 15-19

Aug 5-9

Aug 12-16



Farm Adventurers Camp

Spend a week exploring the world of farming! Activities will include animal interactions, agricultural education, and actual work experience for which your child will receive an official volunteer certificate. Participants will learn to work with various farm animals. They will create crafts with material from the farm, learn about the history of Seattle-area agriculture, and participate in farm chores.

Ages: 11-13

Fees: \$150 (R) \$180 (N)

Hours/Dates: Mon-Fri, 9 a.m.-2:30 p.m.

June 24-28

July 8-12

July 15-19

July 22-26

July 29-Aug. 2

Aug 5-9

Aug 12-16



Cartooniversity Day Camp

Join professional cartoonist Jeff Johnson for a unique opportunity for kids of all skill levels to explore the art of cartooning in an encouraging, positive classroom environment at Robinswood Park, surrounded by beautiful open spaces containing a pond, picnic areas, and trails. A series of fun, challenging projects showcase multiple areas of study including faces, bodies, character development, layout, perspective, lettering and much more. The emphasis is on developing each student's own style. All materials provided. Come join the fun!

Location: Location: Robinswood Park

Ages: 9-14

Fees: \$400 (R) \$480 (N)

Hours/Dates: Mon-Fri, 10 a.m.-3 p.m.

Aug 12-16

Aug 19-23

Aug 26-30



Teen Programs

Summer Teen Farm Volunteers

Assist Kelsey Creek Farm staff in providing daily care to our farm animals. Help prepare meals for the animals, clean their living quarters, assist with other farm chores, and help bring the animals out to pasture for the day. Teens will learn responsible animal care, job skills, and independence while earning service hours for school. Volunteers should be able to understand and follow directions, be on your feet for a physically active day, and tolerate being outside and working in a farm environment near animals, hay, vegetation, and dust.

Ages: 14-18

Fees: \$15 (R) \$18 (N)

Hours/Dates: Mon-Fri, 8:30 a.m.-4 p.m.

June 24-28

July 1-3

July 8-12

July 15-19

July 22-26

July 29-Aug 2

Aug 5-9

Aug 12-16

Aug 19-23



Counselor in Training: Kelsey Creek Camp Volunteer

Counselor in Training (CIT) volunteers will assist day camp staff in providing a fun and safe experience for 4-6 year old children in our day camp programs. CITs will assist with daily activities for campers by providing attentive supervision, acting as a positive role model, and engaging in activities and games with campers. CITs will learn how to work with children, build job skills and gain independence while earning service hours for school. CIT volunteers should be able to follow directions, be willing to talk to and play games with children, and be comfortable working in a group.

Ages: 15-18

Fees: \$15 (R) \$18 (N)
Hours: 9 a.m.-3:30 p.m.

June 24-28
July 1-3
July 8-12
July 15-19
July 22-26
July 29-Aug. 2
Aug 5-9
Aug 12-16



Counselor in Training: Farm Discoveries Camp Volunteer

Counselor in Training (CIT) volunteers will assist day camp staff in providing a fun and safe experience for 4-6 year old children in our day camp programs. CITs will assist with daily activities for campers by providing attentive supervision, acting as a positive role model, and engaging in activities and games with campers. CITs will learn how to work with children, build job skills and gain independence while earning service hours for school. CIT volunteers should be able to follow directions, be willing to talk to and play games with children, and be comfortable working in a group.

Ages: 15-18

Fees: \$15 (R) \$18 (N)

Hours: 8:30 a.m.-1:30 p.m.

June 24-28
July 8-12
July 15-19
July 22-26
July 29-Aug 2
Aug 5-9
Aug 12-16



Fraser Cabin Heritage Program

Presented by the Eastside Heritage Center in partnership with Bellevue Parks & Community Services, the Fraser Cabin, built in 1888, comes to life with hands-on activities that relate to 1880s settler life. For more information, contact the Eastside Heritage Center at 425-450-1049, or visit eastsideheritagecenter.org. Registration not required.

Ages: Open to all ages

Fees: Free

Hours/Dates: 11 a.m.-3 p.m.

June 15

July 13

August 10



Birthday Parties

Kelsey Creek Farm offers a variety of party packages to make your child's day special. All party packages are approximately two hours long. Each party begins with a guided tour and group activity led by a member of our farm staff. Activities and crafts vary based on party themes. The guided activity time is followed by a one-hour room rental for cake and presents. Room locations may vary, but all party locations are indoor and include:

- ◆ 3 preschool-height tables (6 feet long by 2.5 feet wide) with children's chairs
- ◆ A refrigerator/freezer, microwave
- ◆ Kitchen sink and trash cans
- ◆ A restroom with hand-washing soap and paper towels

Maximum capacity for all parties is 25 people (number includes adults and children) and has been set to respect facility codes, the safety and well-being of the animals, and to ensure guest enjoyment. Please note: animals available for interaction may change without warning based on individual animals' health and wellbeing.



Farm Birthday Party

Celebrate your child's birthday with a visit to our historic farm. Make memories meeting farm animal friends. Birthday party package includes an approximately 45-minute farm tour and farm-themed craft, followed by one hour of room rental.

Ages: 2-11

Fees: \$350 (R) \$420 (N)

Bunny Birthday Party

Celebrate your child's birthday by visiting the farm and meeting our friendly bunny. Enjoy a farm tour, a bunny craft, and extra time visiting the bunnies. Birthday party package includes approximately 45-minute farm tour and bunny themed craft.

Ages: 2-11

Fees: \$350 (R) \$420 (N)

Pony Birthday Party

Celebrate your child's birthday by visiting the farm and meeting one of our ponies. Enjoy a farm tour, pony craft, and special time with the birthday pony. Birthday party package includes an approximately 45-minute farm tour and pony-themed craft, followed by one hour of room rental. Please note: this party does NOT include a pony ride.

Ages: 4-11

Fees: \$350 (R) \$420 (N)



Tours

Experience the farm with a tour designed specifically for groups. Tour themes vary by season. Tours are available weekdays and are approximately 45 minutes long.

Ages: most tours appropriate for children ages 2+ (see below for exceptions)

Kids on the Farm Group Tour

Available year-round

Explore our historic dairy farm with hands-on fun as you meet our farm animals. Learn interesting animal facts and local history as you travel back in time to when Bellevue was mostly farmland and forest. Go into the animal barn to see where the animals sleep at night and work on barn “chores” with child-sized pails and rakes.

Fuzzy Farm Friends Group Tour

Available year-round

Have you ever wondered where yarn and wool sweaters come from? How does a sheep give us a pair of warm wool socks? Meet the Kelsey Creek Farm sheep and practice the skill of carding wool all while learning about sheep and fiber processing. Children will create a fuzzy sheep craft to take home.

Pioneers on the Farm Group Tour

Available year-round (recommended for ages 4+)

Imagine life in Bellevue in the 1880s. Children spend time looking around the Fraser cabin, built in 1888, and learning about what life was like for the pioneers when they arrived in the Bellevue area. Practice pioneer living history skills and go on a farm walk to learn how some of our farm animals would have been used by the pioneers.

Springtime in the Barnyard Group Tour

Available mid-May-mid-June

Welcome springtime in the barnyard with a hands-on tour among our favorite animals. Learn about their care, then get dirty in the garden planting and watering seeds.

Fall on the Farm Group Tour

Available October only

Experience harvest season on the farm! Visit with some of our friendly farm animals and watch them eat a pumpkin treat. Then finish up by enjoying a story in our indoor off-the-vine pumpkin patch. Pumpkins are available for purchase for an additional fee.



Rentals

For more rental information including pricing and room specs, visit BellevueWA.gov/kelsey.

Outdoor Rentals

Kelsey Creek Farm Picnic Shelter

Rent Kelsey Creek Farm's Picnic Shelter for your next event! This covered picnic shelter has a capacity of 75 people and includes 6 picnic tables and 2 charcoal grills. To reserve, send an email with requested dates and times to kelseycreekfarm@bellevuewa.gov



Indoor Rentals

Looking for space to host a party, class, or meeting? Kelsey Creek Farm features several indoor rental spaces including a farm house with a 760 square-foot community room and kitchen space as well as a 900 square-foot room in the historic 1943 barn. The unique farm setting makes these spaces perfect for memorable events.

Both rental spaces can be reserved seven days a week, and these spaces easily accommodate groups large or small with rooms for groups from 10 to 30 people. To reserve, send an email with requested dates and times to kelseycreekfarm@bellevuewa.gov

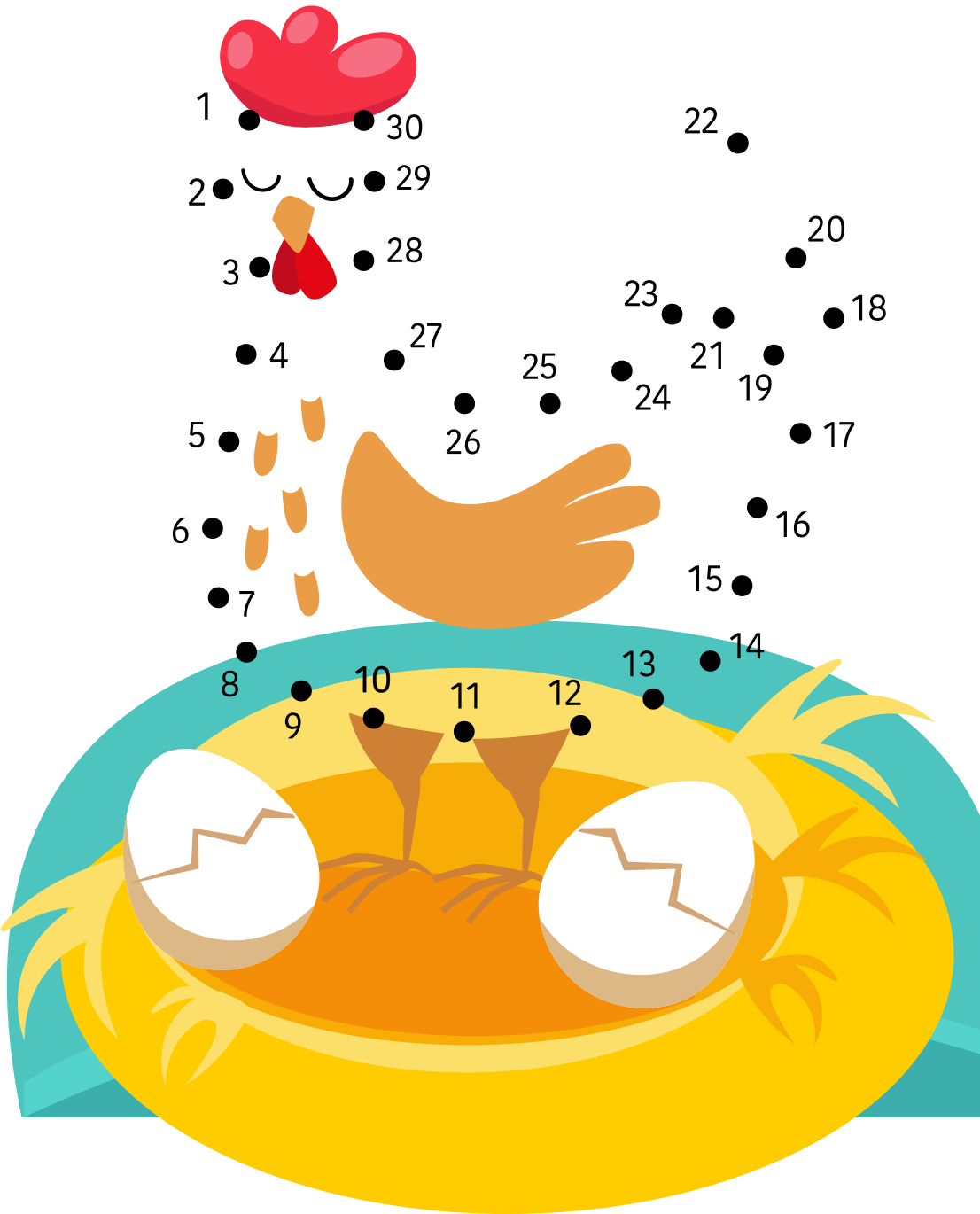
Kelsey Creek Farm Room (Education Barn)

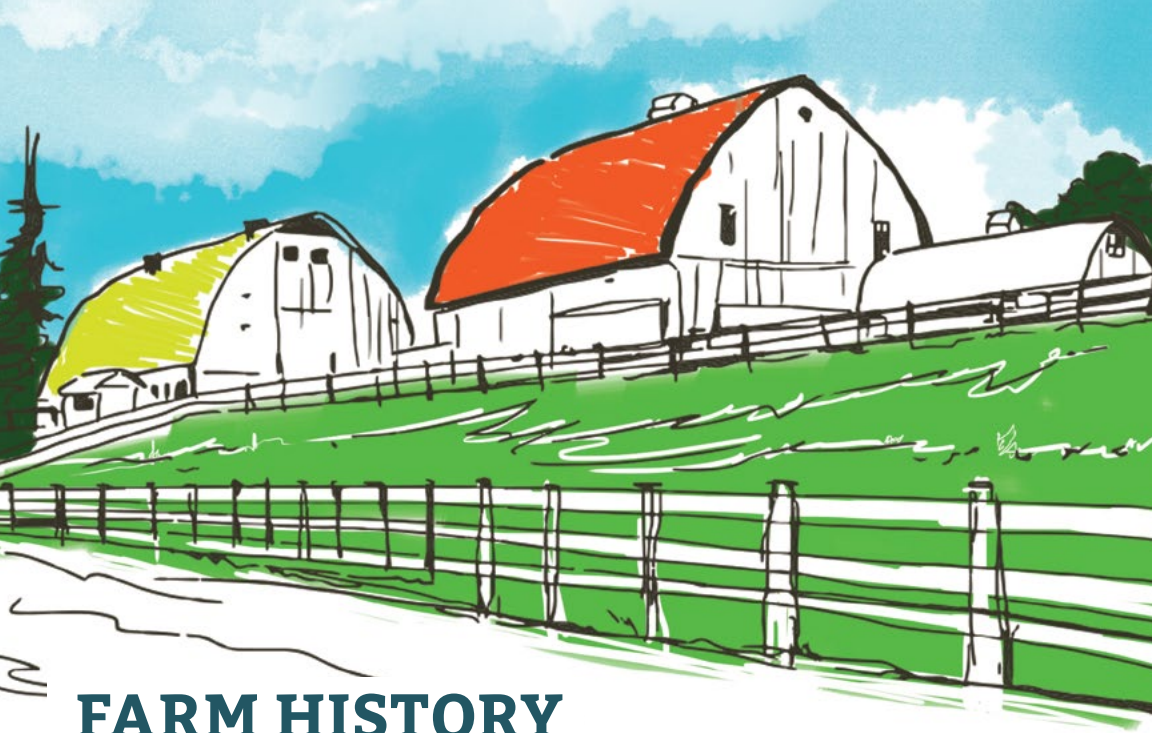


Kelsey Creek Farm House



Connect the dots from 1 to 30





FARM HISTORY

The farm's history began in 1921, when the Duey Family rented 190 acres and began delivering cream and butter stamped with the name Twin Valley Dairy. In August of 1933 the original barn burned. Mr. Duey, a skilled carpenter, along with some hired hands, rebuilt the barn in two weeks. Today, this barn is the smaller of the two barns and is called the Animal Barn. Mr. Duey also built the Red Barn, originally used as a milk house.

The second dairy barn was built in 1943–44 by Mr. Michaels, the new owner, (this is the north barn now known as the Education Barn) and the dairy herd was increased in size. After the end of WWII, he sold the farmstead to Ray and Nettie Fisher. The Fishers phased out the dairy operation and began raising Hereford beef cattle. They built the current farmhouse in 1954 and moved to live on the property.

In 1968 neighbors to the farm began a movement to petition the Bellevue City Council to purchase the property and secure it as a public park. The neighbors' petition succeeded, and the city negotiated with the Fisher family to purchase the 80 acres, including the farmhouse, barns and outbuildings. The Fishers sold their farm property to the City at a price much reduced from what they knew that they could get from developers. They did so because they believed in preserving the beauty and legacy of the agricultural buildings and the land.

In 1972 the oldest barn was modified to house an assortment of farm animals for public viewing. The other, larger barn, commonly referred to as the Education Barn, was remodeled inside and used to accommodate a variety of community programs, including children's day camps, art classes, and farm-themed classes, to name just a few.

REGISTER ONLINE!

register.bellevuewa.gov

Scholarships available for
many programs.

(R) RESIDENT / (N) NON-RESIDENT



Kelsey Creek Farm
410 130th PI SE | Bellevue, WA 98005
425-452-7688
KelseyCreekFarm@bellevuewa.gov



For alternate formats, interpreters, or reasonable modification requests please phone at least 48 hours in advance 425-452-4253 (voice) or email hcox@bellevuewa.gov. For complaints regarding modifications, contact the City of Bellevue ADA, Title VI, and Equal Opportunity Officer at ADATitleVI@bellevuewa.gov.